



PACKAIDS FOLDER GLUER



www.packaids.co.uk

Packaids Ltd. • Ruscombe Park • Ruscombe Lane • Twyford • Berkshire • RG10 9LU  
T 0118 934 3877 F 0118 934 0273 E sales@packaids.co.uk

### What items can be automated?

Presentation Folders  
Medical Folders  
CD and DVD Wallets/Holders  
Hotel Key Card Wallets  
Ticket Holders  
Card / Receipt Pocket Wallets  
Square / Pocket / Wallet / Diamond Flap Envelopes  
Envelope with Receipt Tear Off  
Bulk Out Capacity Envelopes  
Catalogue Style Envelope  
Flat to Capacity Cartons  
Carton with Display Header  
Small Cartons  
Crash Lock Presentation Cartons  
Cosmetic Boxes  
Pharmaceutical Boxes  
Self Locking Cartons  
Box Sleeves  
Belly Bands  
Pillow Packs  
Peel & Reveals  
Caddy Holders  
Photo Holders  
Multiple CD/DVD Holders  
Never Ending Squares  
Coin Holders  
Tent Cards  
Wallets  
Reply Mailers  
Trays

Please see pages 3 to 8 for template ideas...

### What part does Packaids do?

From simply running your die-cut singles to assisting with the design, production, die cutting, through to the finished item.

There are so many different items that can be automated, most of the items listed above have unique setups on our machines which include folding, glueing, and taping in one pass.

We are also verse in taking personalised work on that requires to be kept in specific running orders.

See page 2 for an example of an envelope process.

### Why Packaids?

Gluing and Folding go hand in hand and Packaids has over forty years experience of folding paper and board adhesion.

Automating items in excess of 1,000 copies can give large cost savings and time savings compared to hand-finishing. We average above 8,000 items an hour up to over 12,000 p/h.

Packaids have the option to use Hotmelt Glue or Cold Glue to suit the project and we have two very different kinds of sophisticated Folder Gluers which allows us to produce a diverse array of items and achieve an unrivalled flexibility, this combined with Packaids having operators with incredible talent and experience enables us to deliver excellent productivity, consistent accuracy and quality of product you want.

### Advice

- If supplying 'singles' into us, we would always ask that you ensure creases are sharp, especially on the folds that we will be ploughing over.
- Minimum glue flap size we request is 15mm.
- If your item is to have solid print areas on a board, having the grain direction running along the folds will reduce the chances of cracking.
- If item is to be laminated, we recommend putting scores into the glue flap to break through the laminate and allow glue to bond into paper fibres.
- When planning a pocket on a folder, please ask us for advice regarding the position of the glue flap, as more often than not, having the glue flap on the main body rather than on the pocket will give a much better result.
- On certain items such as Belly Bands, we would recommend the back glue flap is tapered in either side to avoid any line up showing.

Please see over leaf.



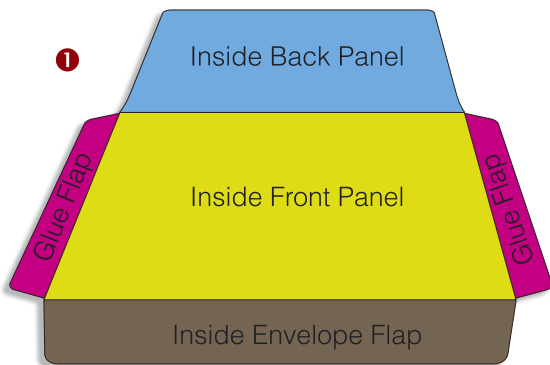
PACKAIDS FOLDER GLUER

packaids

www.packaids.co.uk

Packaids Ltd. • Ruscombe Park • Ruscombe Lane • Twyford • Berkshire • RG10 9LU  
T 0118 934 3877 F 0118 934 0273 E sales@packaids.co.uk

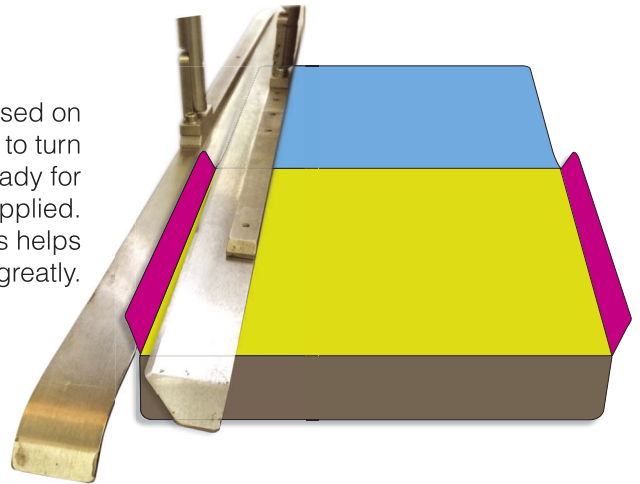
## Basic example of the process to fold glue an envelope...



1

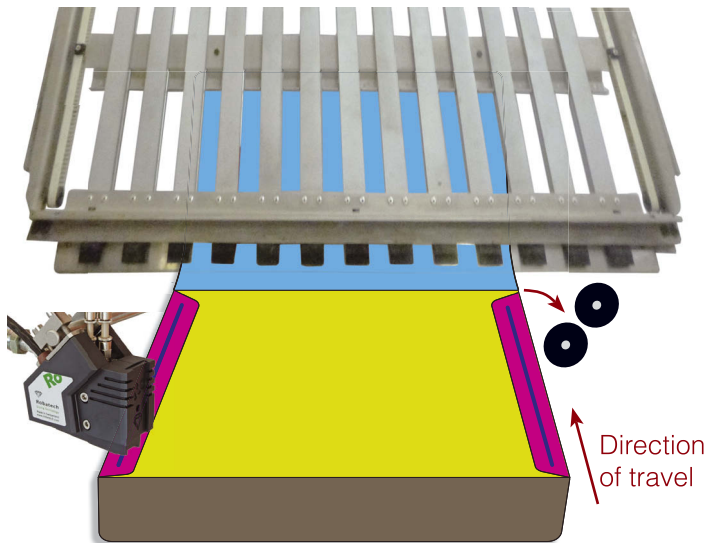
2

'Ploughs' are used on both Glue Flaps to turn them over ready for Glue to be applied. Sharp creases helps this process greatly.



3

Hotmelt or Cold Glue is fired onto the Glue Flap using a pressurised gun.



4

A Folding Plate is used to stop the inside panel travelling and force the two opposing sides downwards at the point of the main crease and marry them together through rollers.



5

Additional process can then be applied in line such as Peel & Seal Tape as well as Red Stripper Tape to the Envelope Flap and then the flap can be folded close.

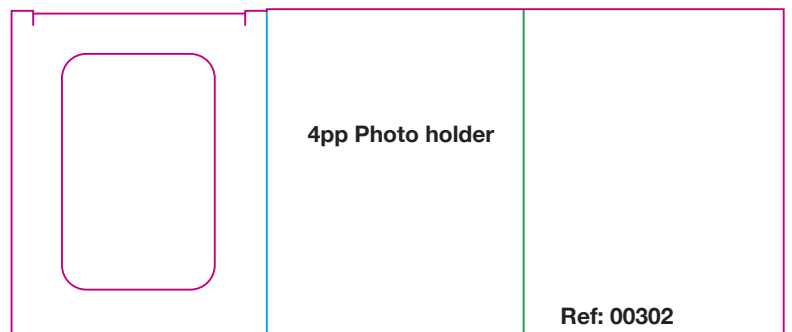
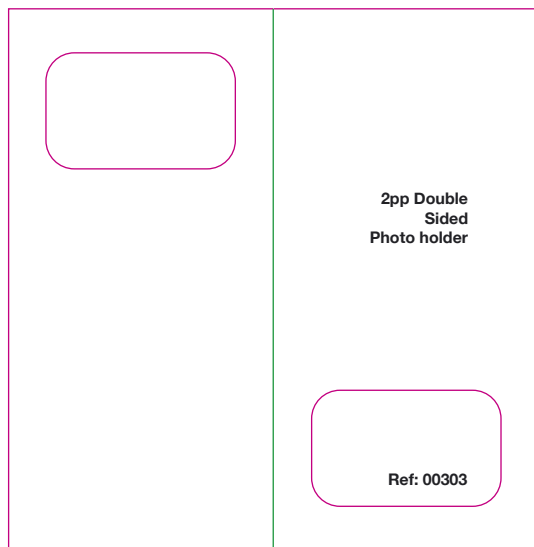
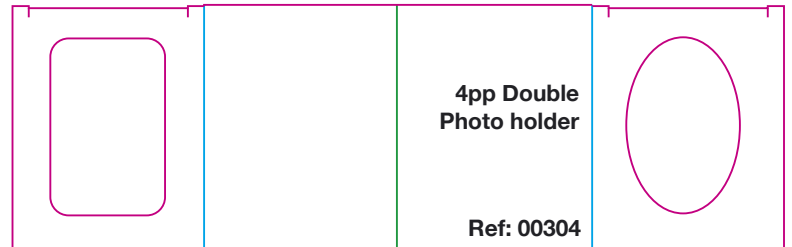
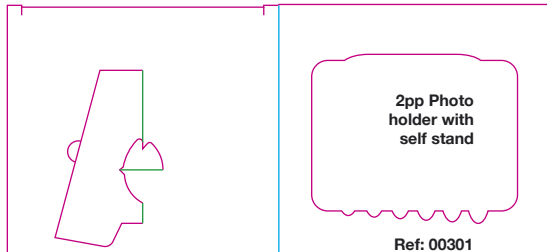
Example of having scores die cut into glue flap to allow even better fibre bonding.



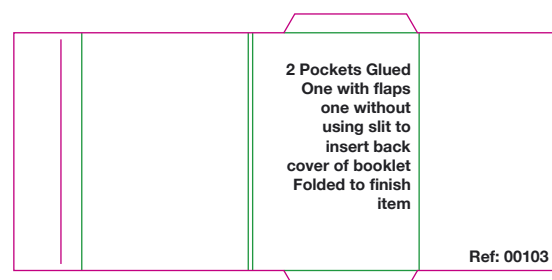
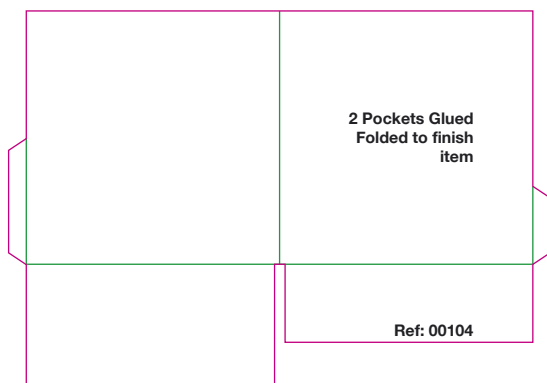
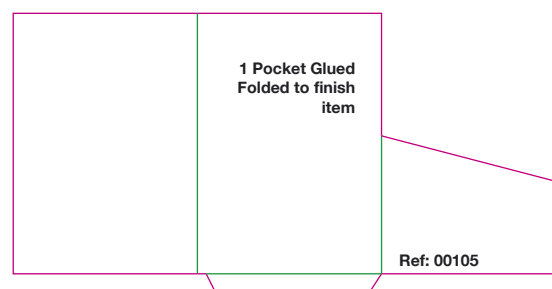
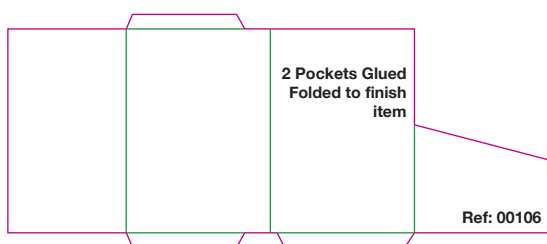
*All advice and recommendations are given subject to trial.*



## Photo Holders

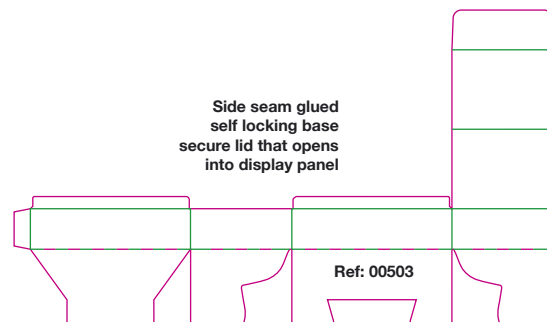
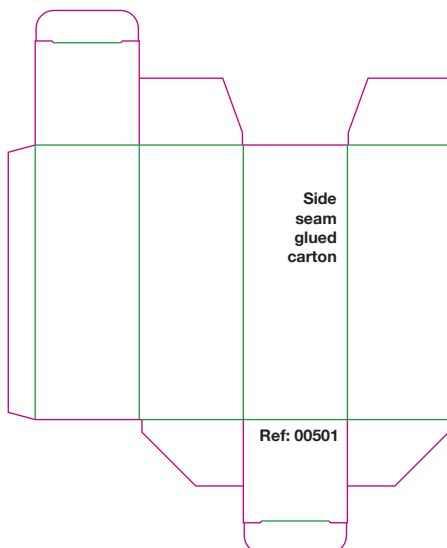
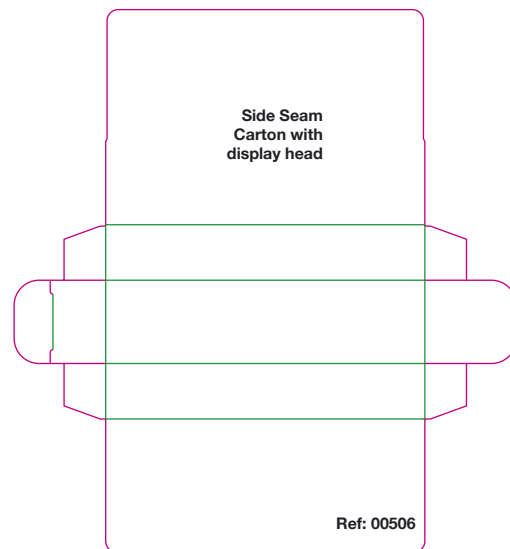
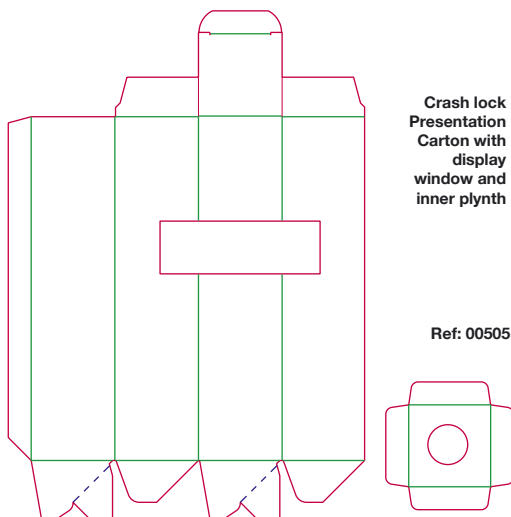
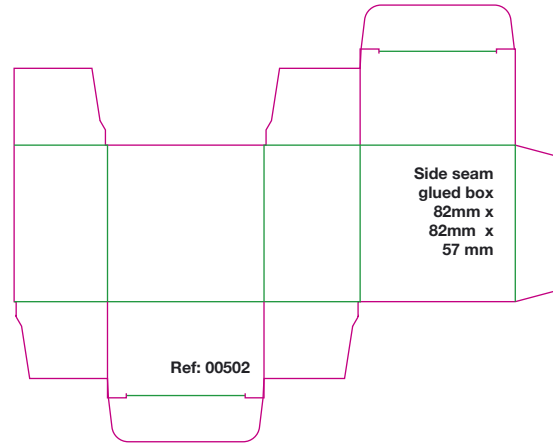
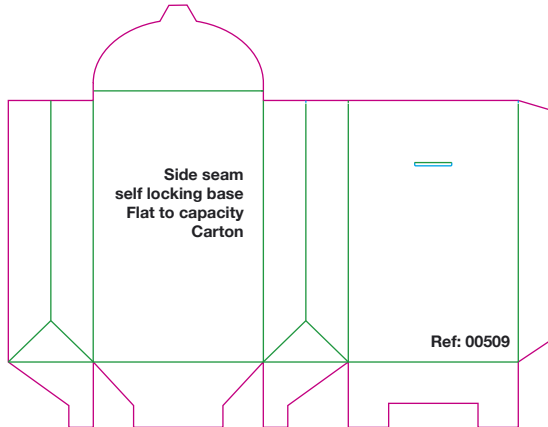


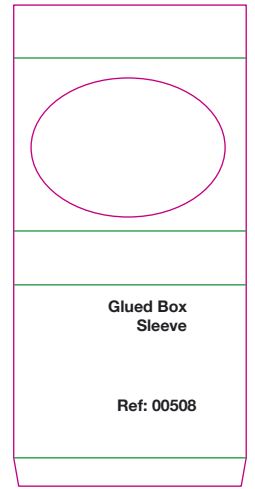
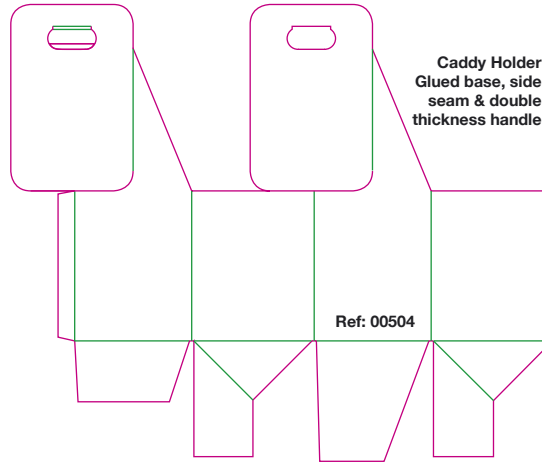
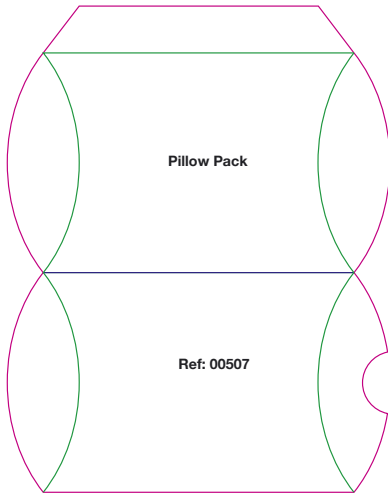
## Folders with Pocket



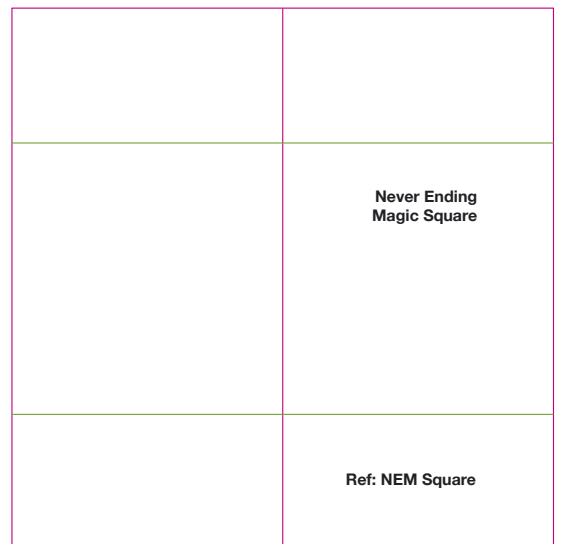
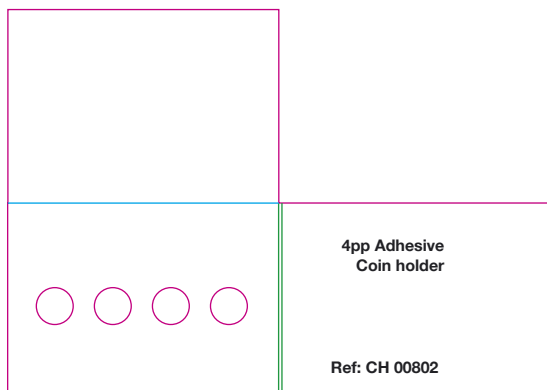
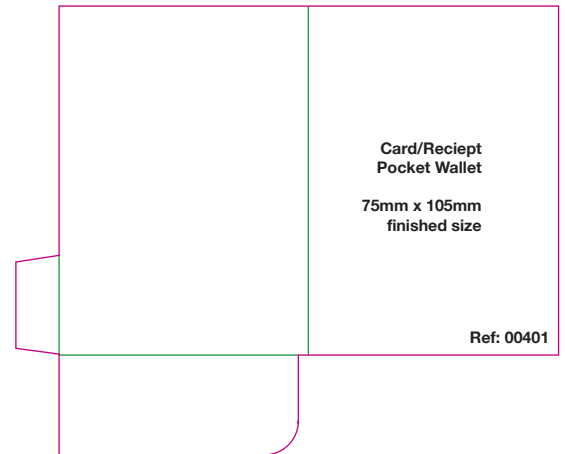
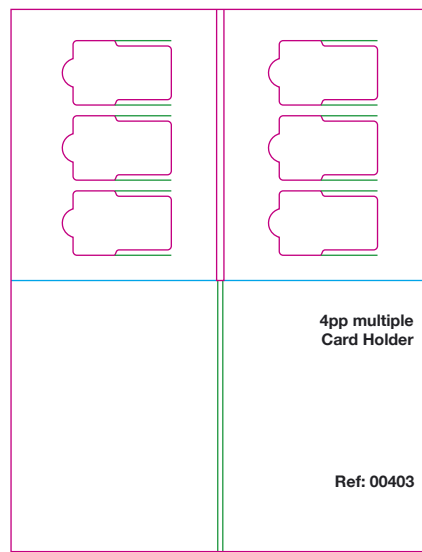
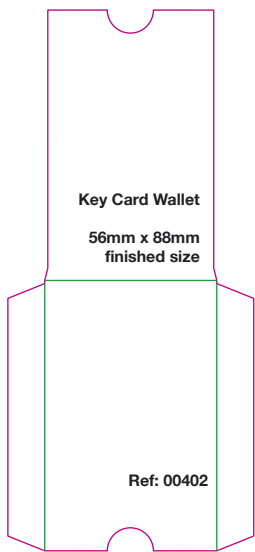


## Crash-Lock and Self Locking Cartons



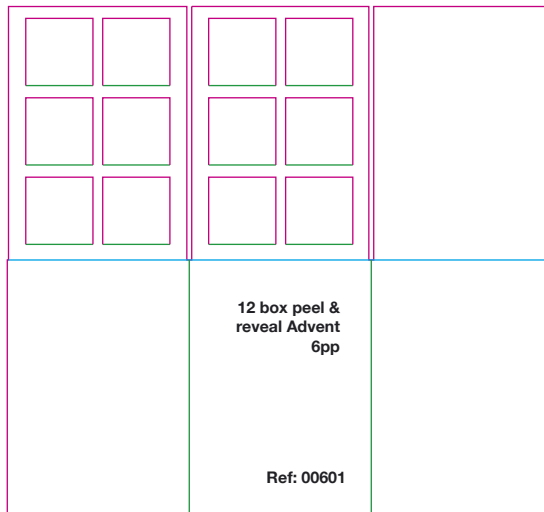
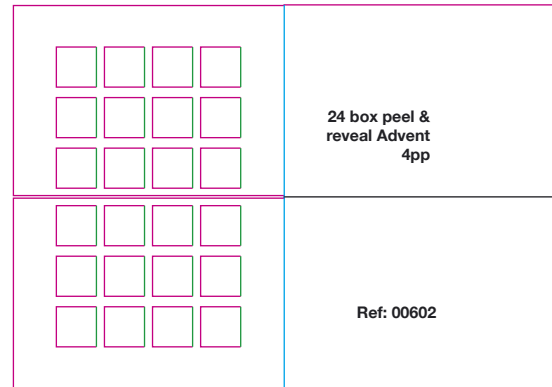
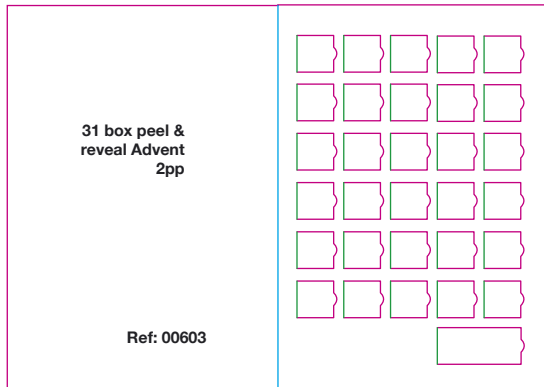


## Key Card and Receipt Holders

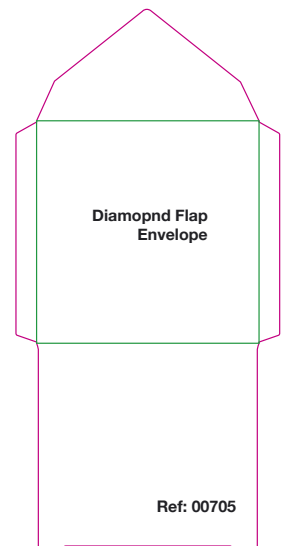
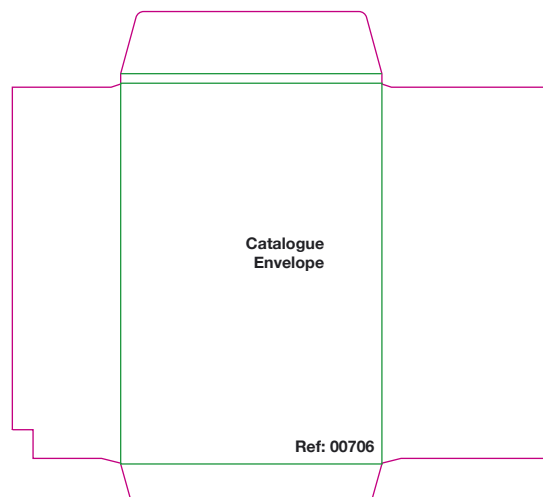
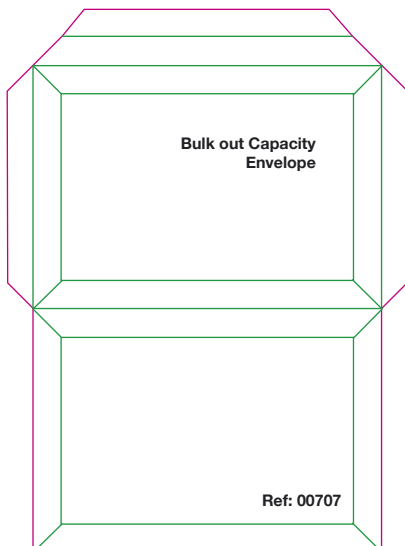


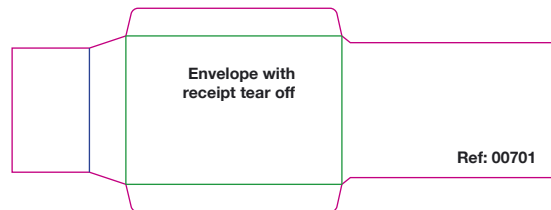
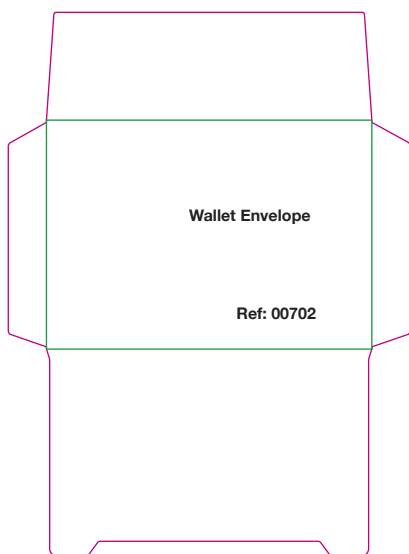
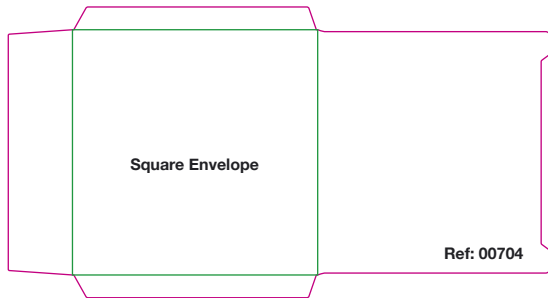


## Advent Calendars

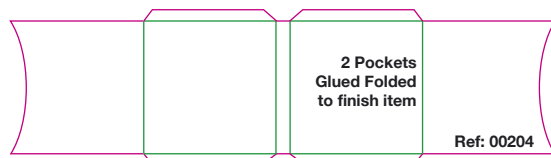
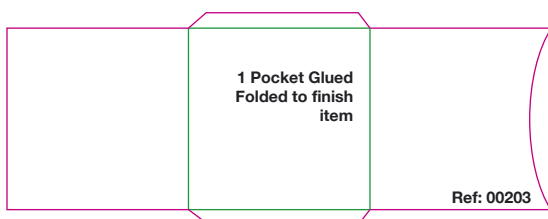
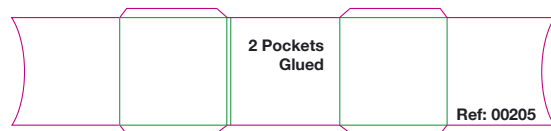
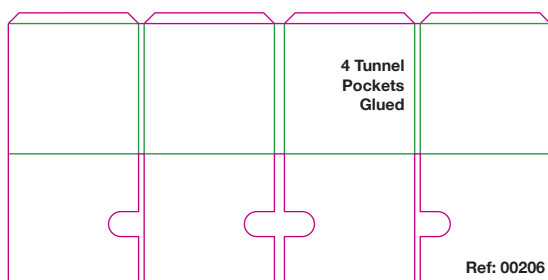


## Envelopes



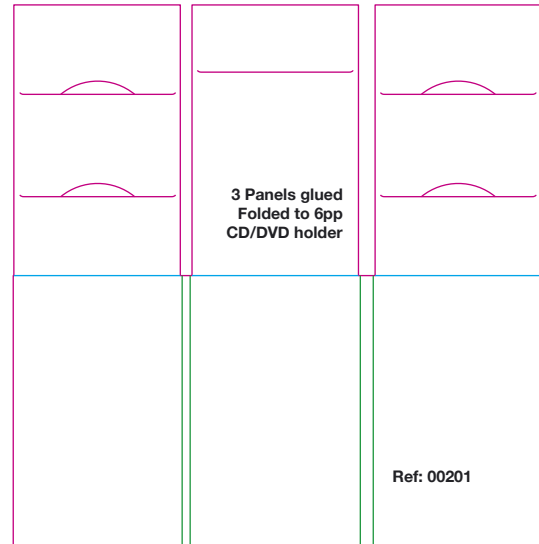
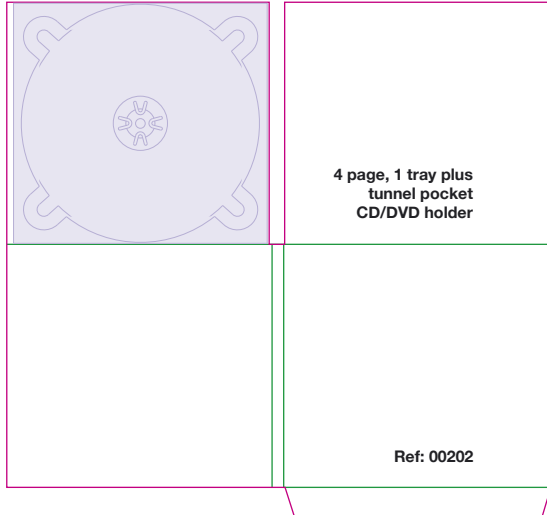


## CD / DVD Holders





PACKAIDS FOLDER GLUER



and much much more!